

Eastwood[®]

DO THE JOB RIGHT.[®]

Items #33968, #33969

ULTRASONIC CLEANERS

INSTRUCTIONS



The **EASTWOOD ULTRASONIC CLEANERS** are specifically designed with heavy-duty, Stainless Steel Tanks and Parts Basket components. The ultra-high frequency, 40,000 Hz, Superheterodyne Transducer design provides precision, damage-free cleaning power of grimy parts without the need for abrasion.

INCLUDES

- (1) Ultrasonic Cleaning Unit
- (1) Stainless Steel Parts Basket
- (1) Stainless Steel Tank Lid
- (1) 6' [1.8m], 2 Conductor Power Cord



SPECIFICATIONS

Current Requirement:	120 Volt AC, 60hz
Maximum Fluid Capacity:	33968: 6 LITER [6.3 Qts.] 33969: 9 LITER [9.5 Qts.]
Maximum Temperature Setting:	176°F (80°C)
Maximum Timer Setting:	99 Minutes
Maximum Power Usage:	33968: 150 Watts - Ultrasonic Clean only, 450 Watts with Heat 33969: 200 Watts - Ultrasonic Clean only, 500 Watts with Heat
Operating Frequency:	40 kHz.
Tank Size:	33968: 11.8" [300mm] L x 6.1" [155mm] W x 5.9" [150mm] D 33969: 11.8" [300mm] L x 9.4" [240mm] W x 5.9" [150mm] D
Degas Function:	Included with both 33968/33969

IMPORTANT SAFETY INFORMATION

The following explanations are displayed in this manual, on the labeling, and on all other information provided with this product:

⚠ DANGER

DANGER indicates a hazardous situation which, if not avoided, will result in death or serious injury.

⚠ WARNING

WARNING indicates a hazardous situation which, if not avoided, could result in death or serious injury.

⚠ CAUTION

CAUTION indicates a hazardous situation which, if not avoided, could result in minor or moderate injury.

⚠ NOTICE

NOTICE is used to address practices not related to personal injury.

IMPORTANT SAFETY INFORMATION

GENERAL SAFETY RULES

WARNING

Read all instructions. Failure to follow all instructions listed below may result in electric shock, fire and/or serious injury. The term “power tool” in all of the warnings listed below refers to your mains-operated (corded) power tool or battery-operated (cordless) power tool.

SAVE THESE INSTRUCTIONS

1) WORK AREA SAFETY

- a) Keep work area clean and well lit. Cluttered or dark areas invite accidents.
- b) Do not operate power tools in explosive atmospheres, such as in the presence of flammable liquids, gases or dust. Power tools create sparks which may ignite the dust or fumes.
- c) Keep children and bystanders away while operating a power tool. Distractions can cause you to lose control.

2) ELECTRICAL SAFETY

- a) Power tool plugs must match the outlet. Never modify the plug in any way. Do not use any adapter plugs with earthed (grounded) power tools. Unmodified plugs and matching outlets will reduce risk of electric shock.
- b) Avoid body contact with earthed or grounded surfaces such as pipes, radiators, ranges and refrigerators. There is an increased risk of electric shock if your body is earthed or grounded.
- c) Do not expose power tools to rain or wet conditions. Water entering a power tool will increase the risk of electric shock.
- d) Do not abuse the cord. Never use the cord for carrying, pulling or unplugging the power tool. Keep cord away from heat, oil, sharp edges or moving parts. Damaged or entangled cords increase the risk of electric shock.
- e) When operating a power tool outdoors, use an extension cord suitable for outdoor use. Use of a cord suitable for outdoor use reduces the risk of electric shock.

3) PERSONAL SAFETY

- a) Stay alert, watch what you are doing and use common sense when operating a power tool. Do not use a power tool while you are tired or under the influence of drugs, alcohol or medication. A moment of inattention while operating power tools may result in serious personal injury.
- b) Use safety equipment. Always wear eye protection. Safety equipment such as dust mask, non-skid safety shoes, hard hat, or hearing protection used for appropriate conditions will reduce personal injuries.
- c) Avoid accidental starting. Ensure the switch is in the off-position before plugging in. Carrying power tools with your finger on the switch or plugging in power tools that have the switch on invites accidents.
- d) Remove any adjusting key or wrench before turning the power tool on. A wrench or a key left attached to a rotating part of the power tool may result in personal injury.
- e) Do not overreach. Keep proper footing and balance at all times. This enables better control of the power tool in unexpected situations.
- f) Dress properly. Do not wear loose clothing or jewelry. Keep your hair, clothing and gloves away from moving parts. Loose clothes, jewelry or long hair can be caught in moving parts.
- g) If devices are provided for the connection of dust extraction and collection facilities, ensure these are connected and properly used. Use of these devices can reduce dust-related hazards.

4) POWER TOOL USE AND CARE

- a) Do not force the power tool. Use the correct power tool for your application. The correct power tool will do the job better and safer at the rate for which it was designed.
- b) Do not use the power tool if the switch does not turn it on and off. Any power tool that cannot be controlled with the switch is dangerous and must be repaired.
- c) Disconnect the plug from the power source and/or the battery pack from the power tool before making any adjustments, changing accessories, or storing power tools. Such preventive safety measures reduce the risk of starting the power tool accidentally.
- d) Store idle power tools out of the reach of children and do not allow persons unfamiliar with the power tool or these instructions to operate the power tool. Power tools are dangerous in the hands of untrained users.
- e) Maintain power tools. Check for misalignment or binding of moving parts, breakage of parts and any other condition that may affect the power tools operation. If damaged, have the power tool repaired before use. Many accidents are caused by poorly maintained power tools.
- f) Keep cutting tools sharp and clean. Properly maintained cutting tools with sharp cutting edges are less likely to bind and are easier to control.

Use the power tool, accessories, and tool bits etc., in accordance with these instructions and in the manner intended for the particular type of power tool, taking into account the working conditions and the work to be performed. Use of the power tool for operations different from those intended could result in a hazardous situation.

ADDITIONAL SAFETY INFORMATION



⚠ DANGER FIRE OR EXPLOSION HAZARD!

- **DO NOT** use solvent based or flammable cleaning agents in this Ultrasonic Cleaner. The unit is designed to operate with water-based cleaning agents only. Exposure to solvents will destroy some components and could present a fire hazard.
- **NEVER** allow the Ultrasonic Cleaner to operate while unattended. Resulting overheating of the Transducer and other internal components can occur.
- **DO NOT** run the Ultrasonic Cleaner for longer than the maximum timer interval. Overheating of the Transducer and other internal components can occur. Allow a minimum 1-hour cooling period before re-using.
- **DO NOT** operate the unit without fluid in the tank. Minimum operating fluid depth is: 2.75" [7cm].
- **DO NOT** attempt to move the Ultrasonic Cleaner while full. Always drain the Ultrasonic Cleaner before moving.
- **DO NOT** place the Ultrasonic Cleaner on a soft surface, where the cooling vents could be blocked. Use only on a hard, level, and stable surface.



⚠ CAUTION SHOCK HAZARD!

- Always plug into an approved, grounded and GFI equipped 120 Volt AC, 60hz. Outlet.
- For indoor use only.
- **DO NOT** allow the cleaning fluid to splash on or contact any of the Ultrasonic Cleaner controls or display.
- **DO NOT** touch the controls, housing, or power plug with wet hands, especially when inserting or removing the plug.
- **DO NOT** attempt to move the Ultrasonic Cleaner while full. Always drain the Ultrasonic Cleaner before moving.
- There are no user serviceable parts inside.
DO NOT attempt to open or disassemble the Ultrasonic Cleaner unit.
- Always unplug the Ultrasonic Cleaner from the power source before filling or emptying.

ADDITIONAL SAFETY INFORMATION



⚠ CAUTION

EXPOSURE TO CLEANING FLUIDS CAN BE A HEALTH HAZARD!

- Contents can splash into eyes. Wear ANSI Z87 approved eye protection while using the Ultrasonic Cleaner.
- Be sure to follow all precautions listed on cleaning fluid containers before using.
- Wear appropriate chemical resistant gloves while handling fluids.
- **DO NOT** operate the unit with the fluid level higher than the maximum fill line with a full load of parts included.



⚠ CAUTION

BURN HAZARD!

- Use caution when adding or removing items from the cleaning tank as the fluid is likely to be hot.



⚠ NOTICE

- **DO NOT** drop any item into the tank as this may cause damage to the Transducer. Always place the items gently into the tank and use the basket whenever possible.
- Intended for use with solid metallic objects only.
DO NOT use with items that are bonded with adhesive, soldered, or contain fluids.
DO NOT use with devices containing fine mechanisms as the high frequency, ultra-sonic vibrations may cause damage.
- Used cleaning fluids are hazardous materials and should be disposed of in compliance with local regulations.

FRONT PANEL FEATURES (FIG 1)

DIGITAL TEMPERATURE DISPLAY: Displays Tank temperature in °F

DIGITAL TIME DISPLAY: Counts down cleaning time in minutes and seconds.

HEAT BUTTON: Switches *Tank Heat* only ON or OFF.

+ TEMPERATURE KEY: Raises Tank Heat Temperature.

- TEMPERATURE KEY: Lowers Tank Heat Temperature.

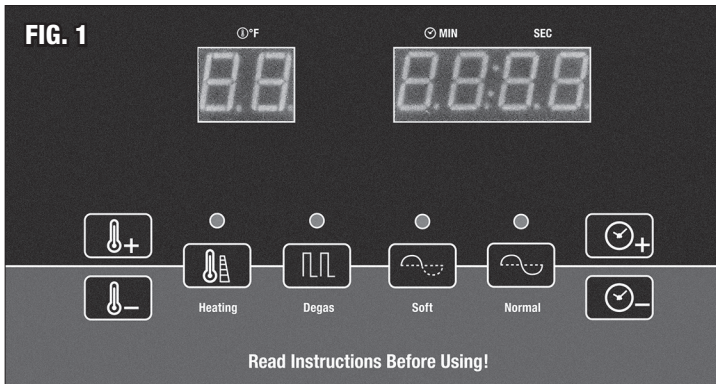
DEGAS BUTTON: Degasses aerated fresh cleaning solution.

SOFT BUTTON: Reduced 60% power setting for delicate cleaning.

NORMAL BUTTON: Full 100% power setting for normal cleaning.

+ TIME KEY: Increases cleaning time.

- TIME KEY: Decreases cleaning time.



REAR PANEL FEATURES (FIG 2)

Main Power Switch: Switches Ultrasonic Cleaner main power On or Off (Up = ON, Down = OFF).

Power Cord Receptacle: Accepts female end of supplied Power Cord.

Cooling Vents: Exhaust air for cooling fan (Intake is at underside of unit).



SET-UP

Ultrasonic Cleaning occurs when high-frequency, ultra-sonic vibrations are created by Transducers and transmitted through the liquid cleaning media. As a result, microscopic bubbles are created on a molecular level. These bubbles very effectively penetrate into and behind dirt and grime particles and explode violently causing the dirt to dislodge leaving behind a clean, like new surface.

⚠ DANGER

FIRE OR EXPLOSION HAZARD!
DO NOT use solvent based or flammable cleaning agents in this Ultrasonic Cleaner. The unit is designed to operate with water-based cleaning agents only. Exposure to solvents will destroy some components and could present a fire hazard.

- Place parts to be cleaned into the supplied Basket. Keep a separation between parts, not allowing them to touch as this will greatly reduce the cleaning action.
- Lower the Basket into the Tank area (FIG 3).

⚠ NOTICE

The Basket MUST be used. DO NOT allow the parts to be cleaned to come in contact with the inside walls or floor of the Cleaner.

- Fill the Tank with an approved water-based cleaning solution ONLY to the maximum fill level indicated on the inside wall of the Tank (FIG 4). **DO NOT** exceed the maximum fill level line which is the interior wall ledge that supports the Basket.

FIG. 3



FIG. 4



- Parts should be covered by the cleaning solution for it to work. If they protrude above the surface, remove parts, or rotate the part through several cleaning cycles so that all surfaces receive cleaning exposure. **DO NOT** overfill with cleaning fluid in an attempt to cover parts.
- Place Lid over the open Tank (**FIG 5**).
- Plug the Power Cord into the receptacle on the rear of the cabinet (**FIG 2**).
- Make sure the main unit Power Switch is turned OFF (Switch located on rear of cabinet).
- Plug power cord into a properly grounded and breaker protected, 120 Volt, 60hz, AC circuit.



OPERATION

- Set the main unit Power Switch to “ON” (Switch located on rear of cabinet).
- HEAT Button [**A**] - Press this button to start heating. A BLUE LED will illuminate when this mode is selected.

▲ NOTICE

All new units will display the ambient fluid temperature on the LED Temperature Display the first time it is used.

SET TEMPERATURE

- Raise Temperature
 - Press **+ Temperature Key** once and release to increase temperature by 1°F,
 - Hold **+ Temperature Key** in to increase temperature by 10°F increments.
- Lower Temperature
 - Press **- Temperature Key** once and release to decrease temperature by 1-degree increments.
 - Hold **- Temperature Key** in to decrease temperature by 10-degree increments.
- **DEGAS** Button [**B**] - Fresh solution may be aerated which will reduce effective ultrasonic action. Using the DEGAS mode speeds up the degassing process and improves cleaning efficiency. A BLUE LED will illuminate when this mode is selected.
- **SOFT** Button [**C**] – This is a reduced 60% power setting for delicate cleaning applications. BLUE LED will illuminate when this mode is selected.
- **NORMAL** Button [**D**] – This is a full 100% power setting for normal cleaning applications. A BLUE LED will illuminate when this mode is selected.

SET TIME

- Increase Cleaning Time Period
 - o Press **+ Time Key** once and release to increase time period by 1-minute increments
 - o Hold **+ Time Key** in to increase time period by 10-minute increments
- Decrease Cleaning Time Period
 - o Press **- Time Key** once and release to decrease time period by 1-minute increments.
 - o Hold **- Time Key** in to decrease time period by 10-minute increments.
- When done, press the **HEAT Button [A]** - Press this button to **STOP HEATING**. the BLUE LED will go out.

⚠ CAUTION BURN HAZARD!

DO NOT touch parts or solution at this point as they will be hot and can cause burns!

- Leave Unit Power Switch “ON” to allow the LED Temperature to display the cleaning fluid temperature. The Lid may be removed to speed cooling. **DO NOT** touch parts or fluid until it has cooled to a safe level.
- When cooled sufficiently, set the Unit Power Switch to “OFF”
- Grasp the Basket by the handles and **slowly remove** it allowing excess fluid to drain into the Tank.

⚠ NOTICE

DO NOT allow excess cleaning fluid to drip onto controls or display!

DRAIN TANK

- Unplug Power Cord from the power source and remove the Power Cord from the receptacle at the rear of the Cabinet.

⚠ CAUTION SHOCK HAZARD!

DO NOT attempt to drain the unit with the Power Cord plugged into the power source!

- Wearing Suitable chemical resistant gloves and eye splash protection, slowly open the Drain Valve (**FIG 6**) and allow the used cleaning fluid to drain into an approved container of the appropriate capacity.

⚠ NOTICE

Used cleaning fluids are hazardous materials and should be disposed of in compliance with local regulations.



MAINTENANCE

- Unplug unit, and use plain, clear water to rinse any residue form the Tank area.

⚠ NOTICE
DO NOT immerse the Ultra Sonic Cleaner in water or permanent damage will occur!

- Replace the Lid and store in a clean, dry area.

TROUBLESHOOTING

PROBLEM	CAUSE	CORRECTION
Does Not Operate When Switch is Turned On	No power to the Eastwood Ultrasonic Cleaner	Check the local 120 VAC power connection.
		Check for tripped circuit breaker.
Does Not Appear To Effectively Clean Parts	May be too many parts in the Basket area, absorbing vibrations and reducing the cleaning effectiveness	
	Parts touching in the Basket area, reducing the cleaning effectiveness	Reduce the quantity of parts in Basket.
		Move parts away from one another, increasing the space between them.
Cleaning solution may be exhausted	Replace with fresh cleaning solution.	
Film Is Observed On Parts Surface After Cleaning	Cleaning solution is exhausted	Replace with fresh cleaning solution.

If you have any questions about the use of this product, please contact

The Eastwood Technical Assistance Service Department: 800.343.9353 >> email: tech@eastwood.com

PDF version of this manual is available at eastwood.com

The Eastwood Company 263 Shoemaker Road, Pottstown, PA 19464, USA

800.343.9353 eastwood.com